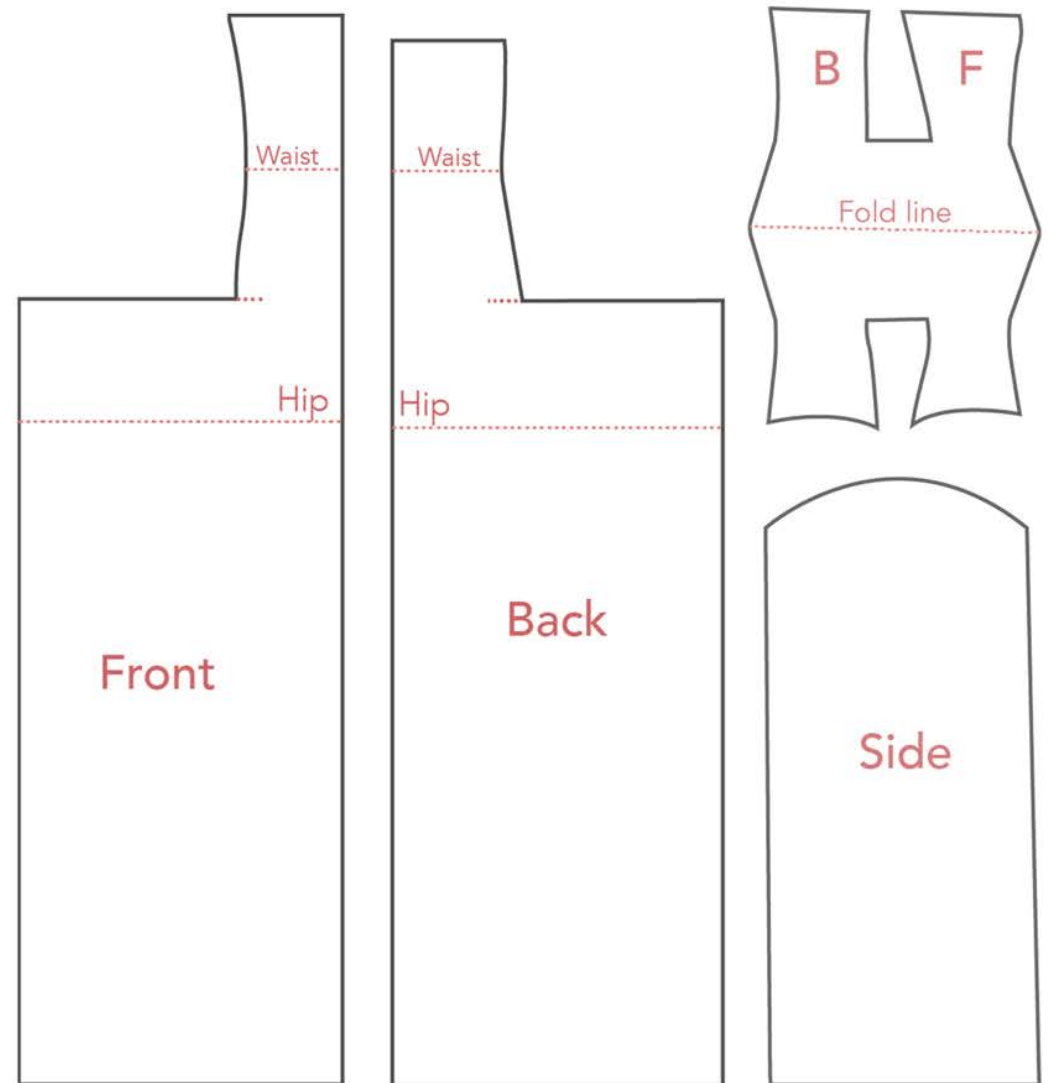




For the hem of this dress I added a line of binding then flipped it up and hand sewed the binding to the dress. However this caused the hem to be stiff and too flat which meant it has an uneven look when compared to the gathers.



An alternative hem finishing would be to bind the raw edge and just turn the binding up. Also using a lighter weight wool or my lining fabric as binding would better suit the garment. The suiting material was okay to sew but made the shell of the dress bunch up and seams too stiff/ rigid.



Pattern diagram